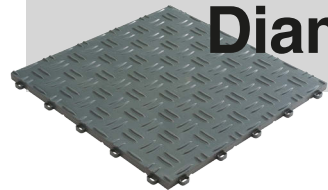




Ribtrax+

Where form meets function.

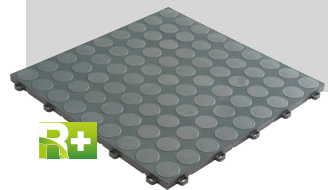
- Garages
- Airplane Hangars
- Patios
- Pools
- Showrooms
- Event Floors
- Display Pads
- Workshops



Diamondtrax+

Sturdy and dependable solid tile.

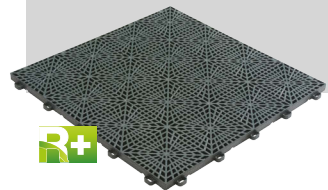
- Garages
- Showrooms
- Event Floors
- Display Pads
- Workshops



Cointrax+

Bold and non-slip solid tile.

- Garages
- Showrooms
- Gyms
- Event Floors
- Display Pads
- Workshops



Sportrax+

Superb multi-use functionality.

- Basketball Courts
- Inline/Roller Hockey Arenas
- Basement/Garages
- Recreation Rooms
- Gyms
- Volleyball Courts
- Badminton Courts
- Boats/Docks
- Pools/Spas/Decks



Floortrax+

Light textured finish.

- Dance Floors
- Showrooms
- Offices
- Gyms
- Event Floors
- Display Pads
- Playrooms



www.swisstrax.com
(866) 748-7940

82-579 Fleming Way #A, Indio, CA 92201

MADE IN THE USA

SWISS DESIGN & PRECISION



Swisstrax Modular Flooring @swisstrax

[youtube.com/swisstraxvideos](https://www.youtube.com/swisstraxvideos)

Getfloored

Swisstrax is the modern alternative to standard concrete and epoxy flooring.

Transform your floor in hours.



The Swisstrax Brand

Swisstrax, Inc. offers a practical and modern alternative to standard concrete and epoxy flooring. Randy Nelson, President, directed the development of this revolutionary modular flooring product line in Switzerland for over 20 years before bringing the product to the USA in 2003. Today, the Swiss engineered flooring is proudly manufactured and distributed in the USA from its headquarters in Southern California.

Since manufacturing began in the United States, Swisstrax flooring has been the #1 choice by top auto industry events including the SEMA Show (Specialty Equipment Market Association) and Barrett-Jackson Classic Car Auctions.

Randy Nelson,
President CEO



Preferred Supplier To



Mercedes-Benz



Getfloored+



Rubbertrax+™

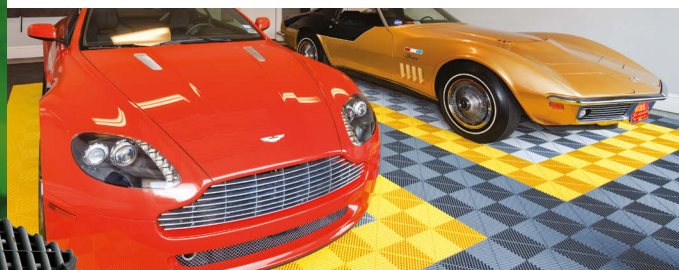
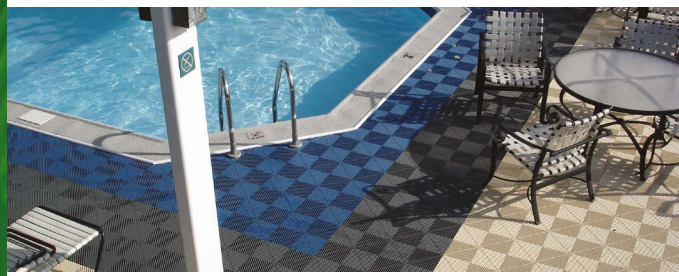
Recycled rubber program.

A Smart, Sustainable Choice We've gone eco-friendly!

Swisstrax is one of the country's top producers of interlocking floor tiles made from recycled tires. We know that consumers of eco-friendly products appreciate and demand superior performance, which is why our recycled rubber tiles are designed to be one of the longest-lasting, highest valued recycled flooring systems for garages and work areas. Our line of recycled flooring also includes anti-fatigue tiles which are a great addition in work areas that get extended standing times.



RubberTrax is LEED points qualified.



Residential Flooring

Swisstrax offers the perfect solution to improve the look of your garage, basement, home office, game room and patio. Our modular floor tiles are also a great way to cover up any flooring imperfections such as cracks or stains.

Whatever your needs are, Swisstrax offers several styles and up to 19 colors to choose from, ensuring that you get the floor you're looking for. We guarantee that our flooring will meet your satisfaction or your money back, no questions asked. Try Swisstrax interlocking floor tiles today!



Commercial Flooring

Liven up your office, shop, trade show booth, locker or any working area with a floor that's appealing to the eye, easy to clean and will last for years. Customize your floor by adding your own logo on it.

Our modular flooring will stand up to the demands of your business. With a temperature tolerance of -22°F to 248°F, over 75,000 lbs. of rollover strength and the ability to support jacks and jack stands with ease, you will find the benefits of Swisstrax interlocking flooring to exceed your expectations.

Top 10 Reasons to install Swisstrax over any other interlocking tile.

- 1. Do-it-yourself project:** Our interlocking tiles snap together tightly with ease, no tools needed!
- 2. Safe:** Non-slip when wet.
- 3. Chemical resistant:** Resistant to Skydrol, the most corrosive hydraulic fluid we know of, as well as other hydraulic fluids and brake fluids.
- 4. Easy to replace a tile:** Pull one tile from anywhere on the floor.
- 5. UV stabilized material:** Resists fading in outdoor applications.
- 6. 4 Point injection:** Prevents edges from curling over time.
- 7. Superior design:** Most material per tile and no more than 3/8" gap of material on underside gives tiles most balanced weight distribution.
- 8. Strong:** Supports jacks and jack stands. Rollover strength up to 75,000 lbs. Compression strength up to 5,120 lbs. per square inch anywhere on the tile.
- 9. Superior quality:** Swiss engineered and Made in the U.S.A. Tested in accordance with national standards such as ASTM as well as Australian and European test method.
- 10. Money back guaranteed:** If you don't love it, send it back. No questions asked.

